



**CEMENT CONCRETE
& AGGREGATES AUSTRALIA**

CEMENT, CONCRETE, STONE & SAND

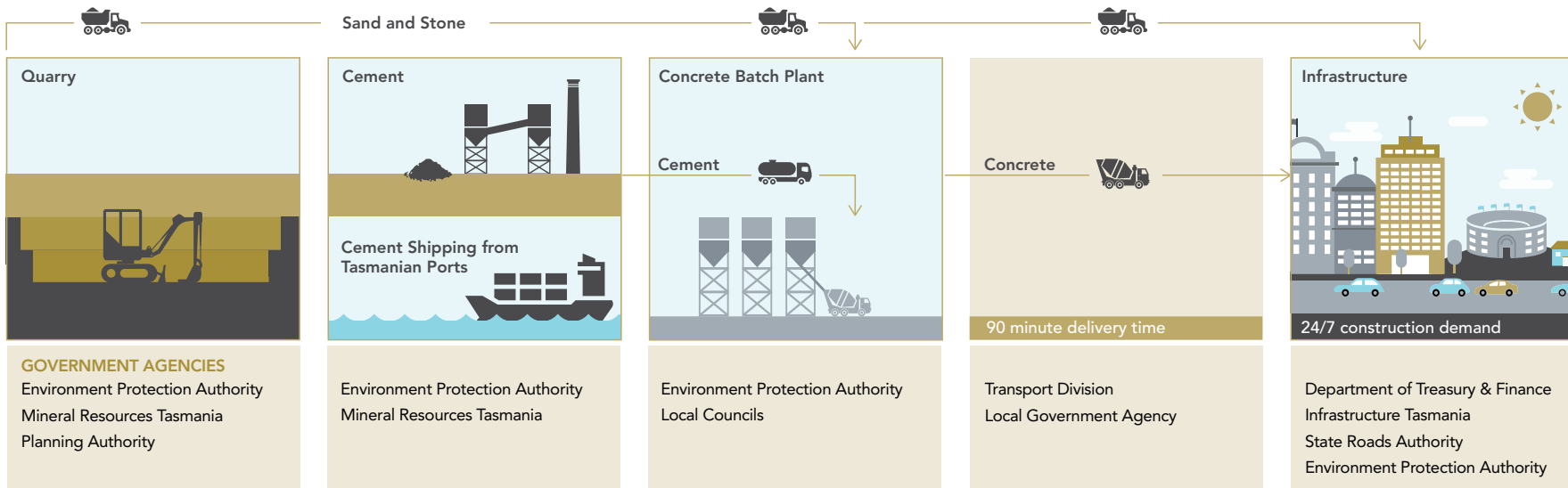
Rebuilding Tasmania; Protecting Lives; Creating Jobs



HEAVY CONSTRUCTION MATERIALS SUPPLY CHAIN

The COVID-19 pandemic has significantly disrupted Tasmania's economy. The construction sector, supported by an efficient and totally local heavy construction materials supply chain, provides the engine for Tasmania's economic recovery. Cement, concrete, stone and sand are the critical materials that enable Tasmania's construction industry, employing 19,500 workers and contributing 57.4% Tasmania's taxation revenue base.

EFFICIENT SUPPLY CHAIN → DELIVERS → JOBS IN A RECOVERING ECONOMY



GOVERNMENT AGENCIES
 Environment Protection Authority
 Mineral Resources Tasmania
 Planning Authority

Environment Protection Authority
 Mineral Resources Tasmania

Environment Protection Authority
 Local Councils

Transport Division
 Local Government Agency

Department of Treasury & Finance
 Infrastructure Tasmania
 State Roads Authority
 Environment Protection Authority

INDUSTRY ISSUES

- ⊗ Complex approvals process
- ⊗ Multiple sets of regulations & Government agencies
- ⊗ Resource security & urban encroachment

- ⊗ Keep port facilities open and efficient for cement

- ⊗ Prescriptive technical specifications
- ⊗ Environmental regulations limit recycling of returned concrete

- ⊗ Slow last km project access approvals

- ⊗ Lack of project pipeline
- ⊗ Projects underfunded
- ⊗ Industry confidence to keep workers

Reducing business costs – greater payroll tax relief, remove quarry fees, remove biodiversity charges, remove land tax burden

WHAT NEEDS TO CHANGE

- ✓ Fast track approvals process
- ✓ Publish Strategic Resource Mapping on The LIST Dec '20
- ✓ Implement Extractive Industry Planning Policy Dec '20
- ✓ 24 hr product loading and sales

- ✓ 24 hr product loading and sales
- ✓ Priority road access

- ✓ Alternative sources of aggregate easily available in concrete mixes if specific quarries closed due to COVID-19
- ✓ Delay introducing new environmental regulations
- ✓ Night time deliveries allowed

- ✓ Streamlined last kilometre permit applications for heavy vehicle access

- ✓ Government stimulus package
- ✓ Bring forward State/Local Government infrastructure projects
- ✓ Fast track development approvals
- ✓ Fast-track infrastructure and road-maintenance work while roads remain uncongested
- ✓ 24 hr site operation and access

IMPLEMENTING THESE CHANGES NOW WILL:

Keep people and communities safe and working

Allow Tasmania to rebuild our economy fast

Attract essential investment

Fast-track critical infrastructure for the future



BENEFITS OF ACTING NOW:

- ✓ Keeps Tasmanians in a job
- ✓ Allows the construction sector to act as the engine room to rebuild the Tasmanian economy fast
- ✓ Heavy construction material supply can ramp up fast
- ✓ Retains industry skills and capability in Tasmania
- ✓ Gives industry confidence to invest and raise capital
- ✓ Delivers Government major infrastructure project plan
- ✓ Drives affordable and innovative infrastructure



TASMANIA OFFICE
PO Box 1441
Lindisfarne TAS 7015

(61 3) 6491 2529
www.ccaa.com.au
info@ccaa.com.au

f 1CCAA t @ccaa_au in cement-concrete-aggregates-australia

